

PORTABLE EQUIPMENT

# N130-GL



**GRINDING  
WHEELS  
BALANCER**

**VIBROMETER**

**TACHO**



**NEW**



# CEMB

BALANCING MACHINES

# N130-GL PORTABLE EQUIPMENT



## STANDARD ACCESSORIES

- No.1 accelerometer transducer 100mV/g
- No.1 magnetic base  $\varnothing$  25mm
- No.1 probe
- No.1 transducer connection cable L 2m
- No.1 Photocell complete with upright and magnetic base
- No.1 Connection cable 2m for photocell
- Set of angle rules
- No.1 USB stick with manuals
- Battery charger with multiplug adapters
- Carrying case
- Micro USB Cable

## OPTIONAL ACCESSORIES

- No.1 Connection cable 5m for transducer
- No.1 Extension cable 10m for transducer
- No.1 Extension cable 10m for photocell





# The smart solution for Grinding wheel machines

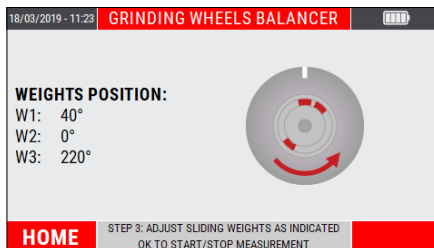
Intuitive functions under full control



10 KHz Vibrometer and Machine Analyzer

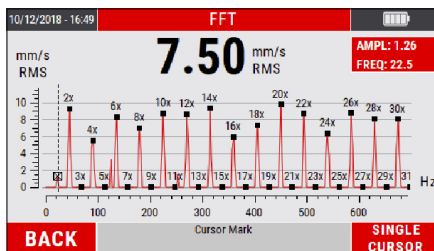
- **4.3" color graphic display**  
Very high luminosity and contrast for sunlight use  
Wide view angle
- **Enhanced click keyboard**  
Optimal tactile feedback  
Designed for gloves use
- **Heavy duty and metallic connectors**
- **Fast measure**
- **Huge memory space**  
14.8 GByte, expandible to 128 GByte  
1000+ measures for each type
- **Easy reporting**  
Screenshot display capture and save  
Smart route data store  
Output file: JSON format  
Micro USB 2.0 data port

## GRINDING WHEEL BALANCING



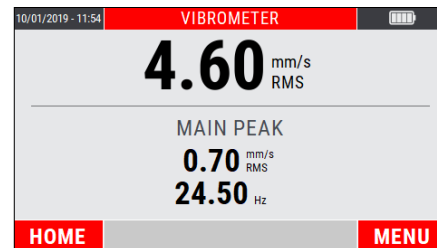
- Grinding balancing with 2 or 3 counterweights
- Graphic interface with real time correction
- Balancing Report

## HIGH RESOLUTION FFT



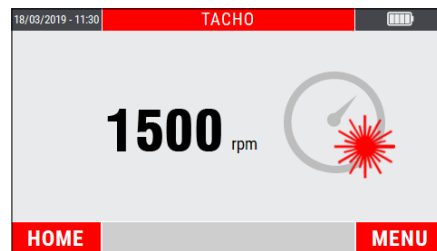
- Graphic zoom
- Peak cursors
- Autoscale feature
- List of main peaks

## VIBROMETER



- Big readable characters
- Overall with main peak
- 1x fundamental with phase
- Speed rotation

## TACHO

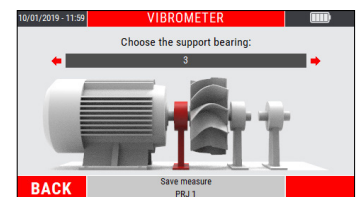


- Automatic rotation speed detection

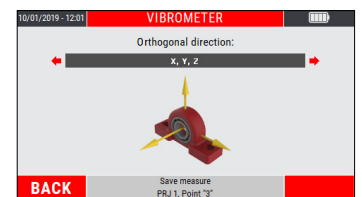
## INTELLIGENT DATA SAVING



STEP 1: Enter the machine name



STEP 2: Select the bearing



STEP 3: Enter the X, Y or Z direction

# CEMB

# TECHNICAL DATA

## GENERAL CHARACTERISTICS

- Display: 4,3" colour LED-backlit TFT LCD (480 x 272 pixel)
- New EasyClick tactile keyboard with embossed keys
- Internal memory: 14,8 Gb (expandible to 128 Gb)
- Multi languages user interface

## MEASUREMENT TYPES

- Effective value (RMS)
- Peak value (Pk)
- Peak-to-peak value (PP)

## MEASURING PERFORMANCE

- Bandwidth: 1-10 KHz
- FFT Resolution: Max 3200 lines
- Tacho: Up to 250000 rpm

## UNITS OF MEASUREMENT

- Acceleration: [g]
- Velocity: [mm/s] or [inch/s]
- Displacement: [µm] or [mils]
- Frequency: [Hz] or [Cpm]

## INPUT

- 1 measuring channels IEPE sensor, accelerometer and velomitor.  
With a specify cable pluggable on a BNC for read any dynamic signal max. 10V PkPk
- 1 photocell channel (velocity and angle reference)
- 1 MicroUSB 2.0 port for data transfer
- 1 jack plug for battery charger

## AMBIENT

- Temperature: from -20° to +70° C
- Air humidity: from 0 to 95% without condensate
- Protection: IP54

## POWER SUPPLY

- Long Life Battery: > 8 hours based on typical use
- Charging time: 2,5 hours for 80% recharge  
4 hours for 100% recharge
- Rechargeable 3100 mAh Lithium battery
- Power supply-battery charger for 100-240 V, 50/60 Hz (24 V, 1.5 A)

## CARRYING CASE DIMENSIONS AND WEIGHT

- Approx. 370(L) x 300 (H) x 115(D) 1800 g



**CEMB S.p.A.** - Via Risorgimento, 9  
23826 Mandello del Lario (LC) - Italy  
[www.cemb.com](http://www.cemb.com)



**Vibration analysis division:**  
Phone +39 0341 706111  
e-mail: [stm@cemb.com](mailto:stm@cemb.com)

All the data and features mentioned in this catalogue are purely for information and do not constitute any commitment on the part of our company, which reserves the right to make any and all alterations it may consider suitable without notice.